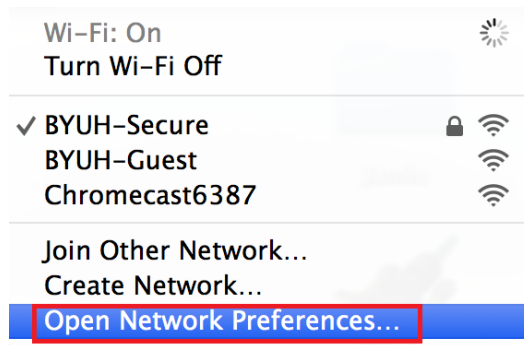


Mac: ISE Authentication to BYUH-Secure

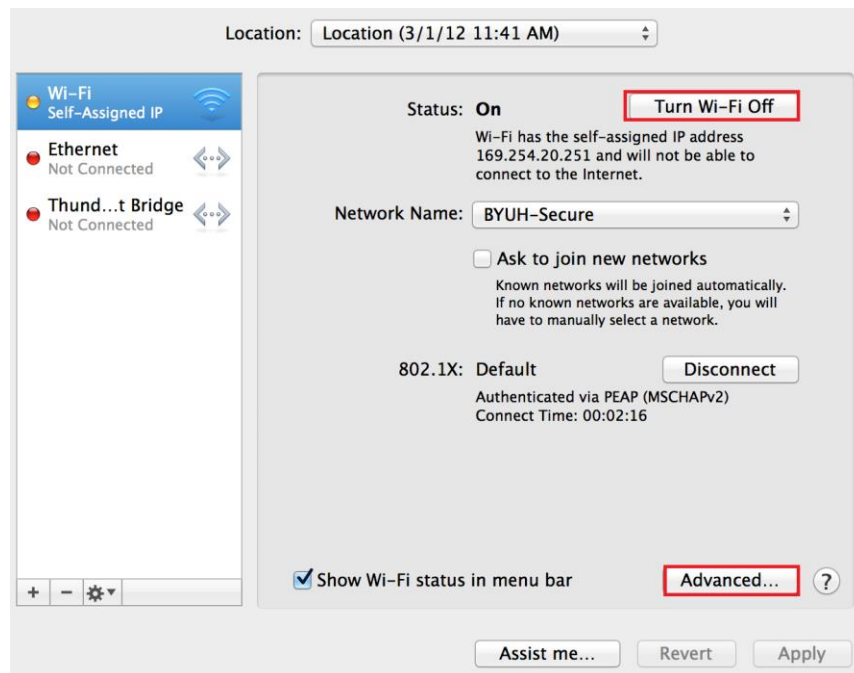
1. Click on the Wifi Icon on the Top Right Hand side of your screen.



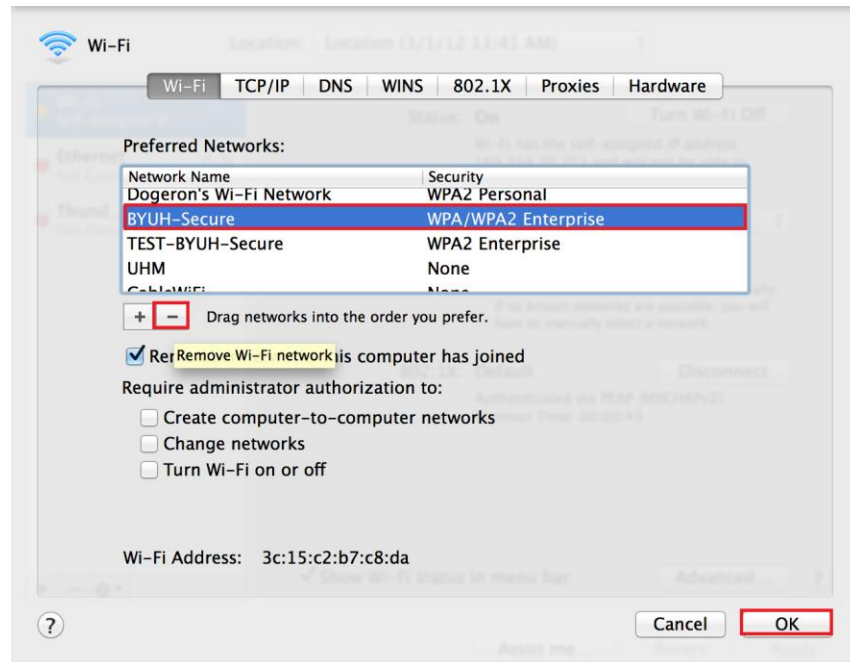
2. Scroll down to Open Network Preferences.



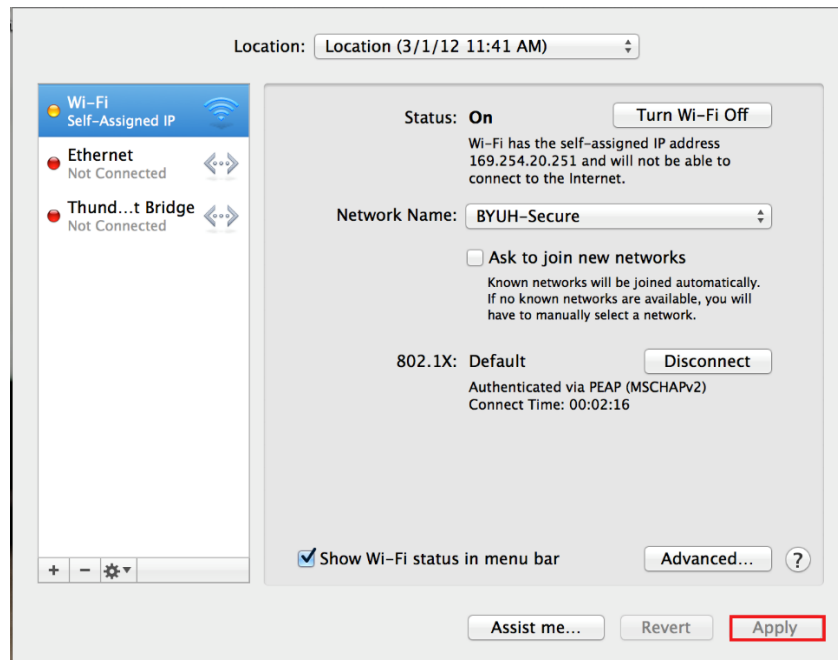
3. Select Turn Wi-Fi Off, then click on Advanced



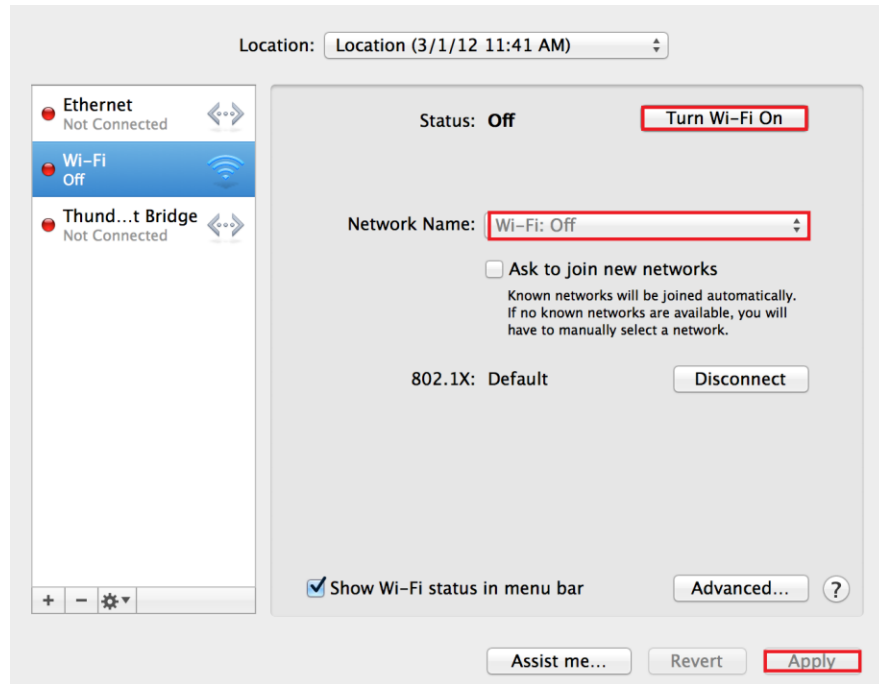
- Under Preferred Networks: Scroll down and select BYUH-Secure. Once you've Selected BYUH-Secure, click on the minus sign to Remove Wi-Fi Network, then click OK.



- Click on Apply.



6. Click Turn Wi-Fi On, Under Network Name: click on the drop down arrow to select BYUH- Secure, and click APPLY.



7. You will be prompted to enter your CESNET ID and Password.

