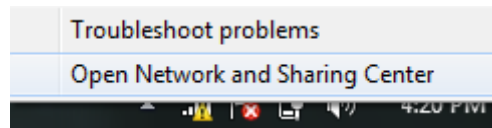


Windows 7: ISE Authentication to BYUH-Secure

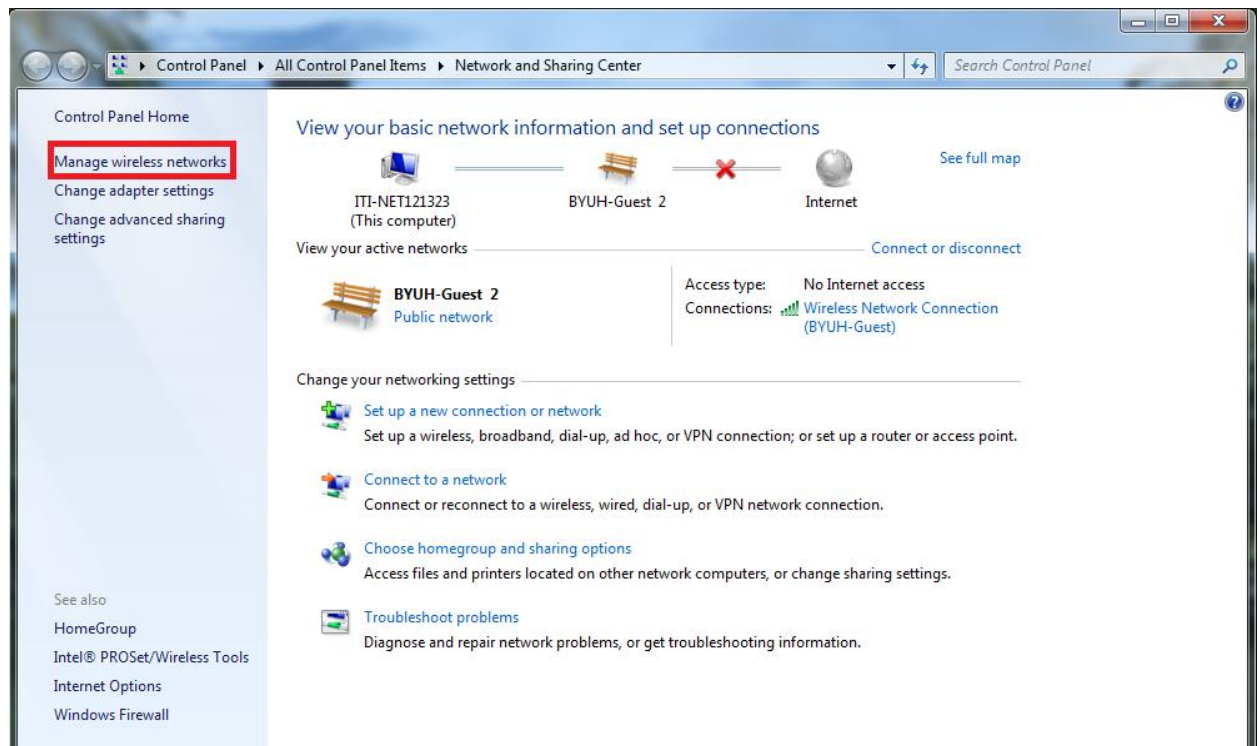
1. Click on the Wifi Icon on the Bottom Right Hand side of your screen.



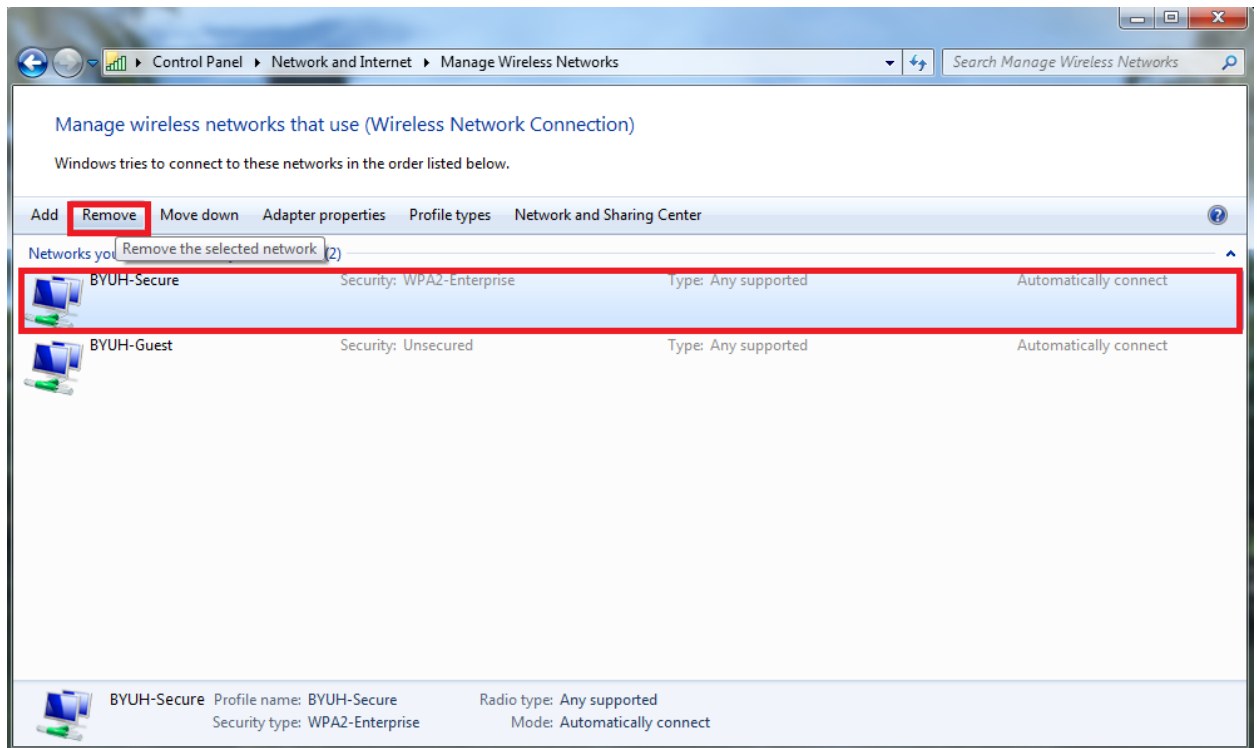
2. Right click on the Wifi icon and select Network and Sharing Center.



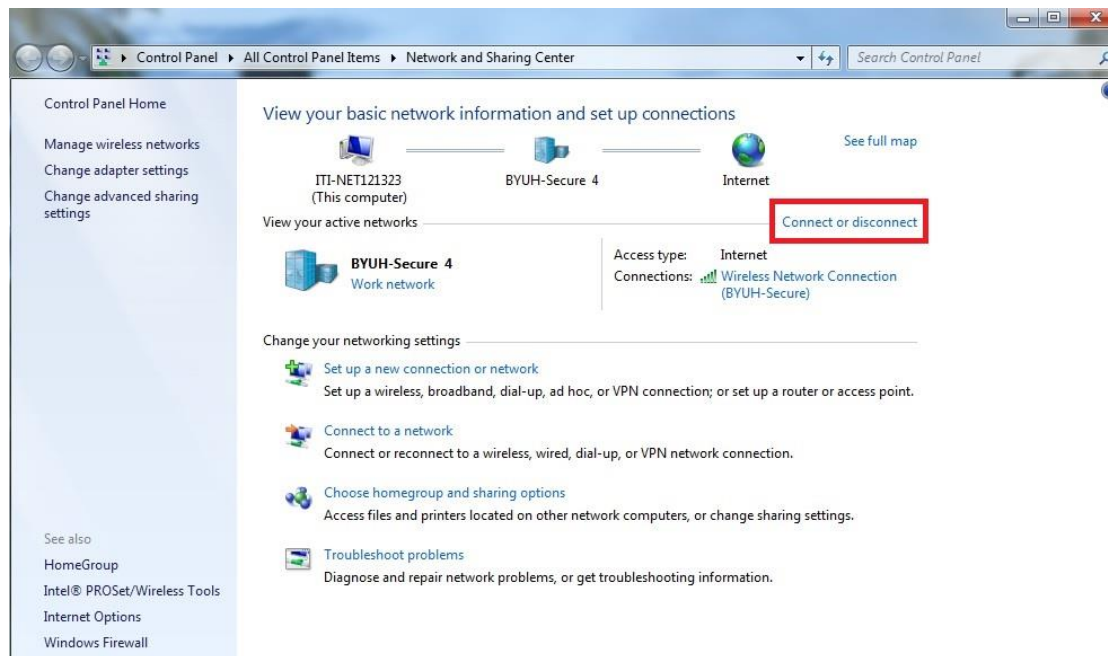
3. On the left hand side, click on Manage wireless networks.



4. Select BYUH-Secure and click Remove, to remove the selected network, then click on the back button on the top left.



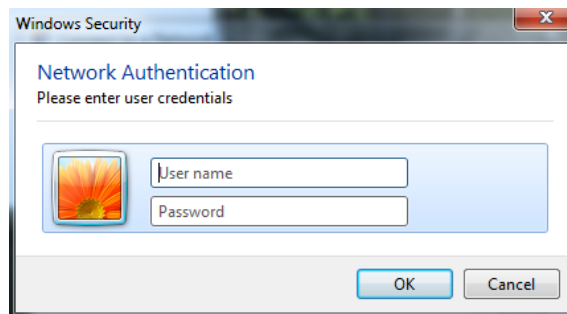
5. Under View your basic network information and set up connects, select Connect or disconnect.



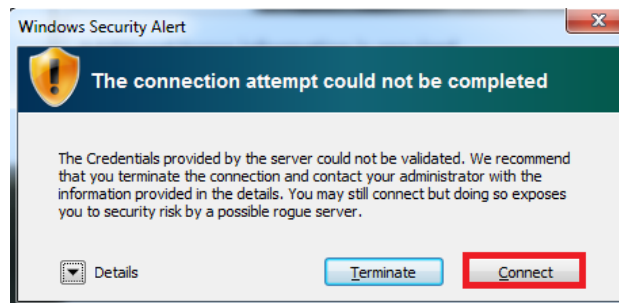
6. Search for and select BYUH- Secure, and click on Connect.



7. You will be prompted to enter your CESNET ID and Password.



8. If you see this message, click on Connect.



9. You should now be connected to BYUH-Secure.